

# Natural Premium Stones Portfolio



# Our History

We are entrepreneurs who came together to create a solution aimed at being recognized as a reference and excellence in the commercialization of rocks in the international market.

Our goal is to promote the sustainable development of extraction within the production chain and to elevate Brazil's name as an international benchmark in commercialization.

**Quality, Transparency, Agility, Reference, and Commitment:** these principles define RB BROKER NEXT FRONTIER, excellence in rock commercialization.



# Ornamental

Ornamental Granite is a **resistant and sophisticated natural stone**, featuring light yellow, beige tones, and dark veins. Widely used for countertops and cladding, it stands out for its durability, low porosity, and easy maintenance, complementing various decor styles.





# Bege Bahia

Bege Bahia Marble is a **natural stone with a light beige tone, fine grain, and subtle brown and grayish veins**. Elegant and versatile, it is widely used for countertops, flooring, and cladding, standing out for its durability and easy maintenance.





# White Dallas

White Dallas granite is a **natural stone with a white background and soft gray veins, speckled with small dark grains**. Known for its elegance and versatility, it is ideal for countertops, flooring, and cladding, bringing lightness and sophistication to spaces.





# White Itaúnas

White Itaúnas granite has a **soft white to beige tone, with fine grains in gray and cream**. Its elegant and uniform finish is ideal for countertops and flooring, providing a clean and timeless look.





# Brushed White Itaúnas

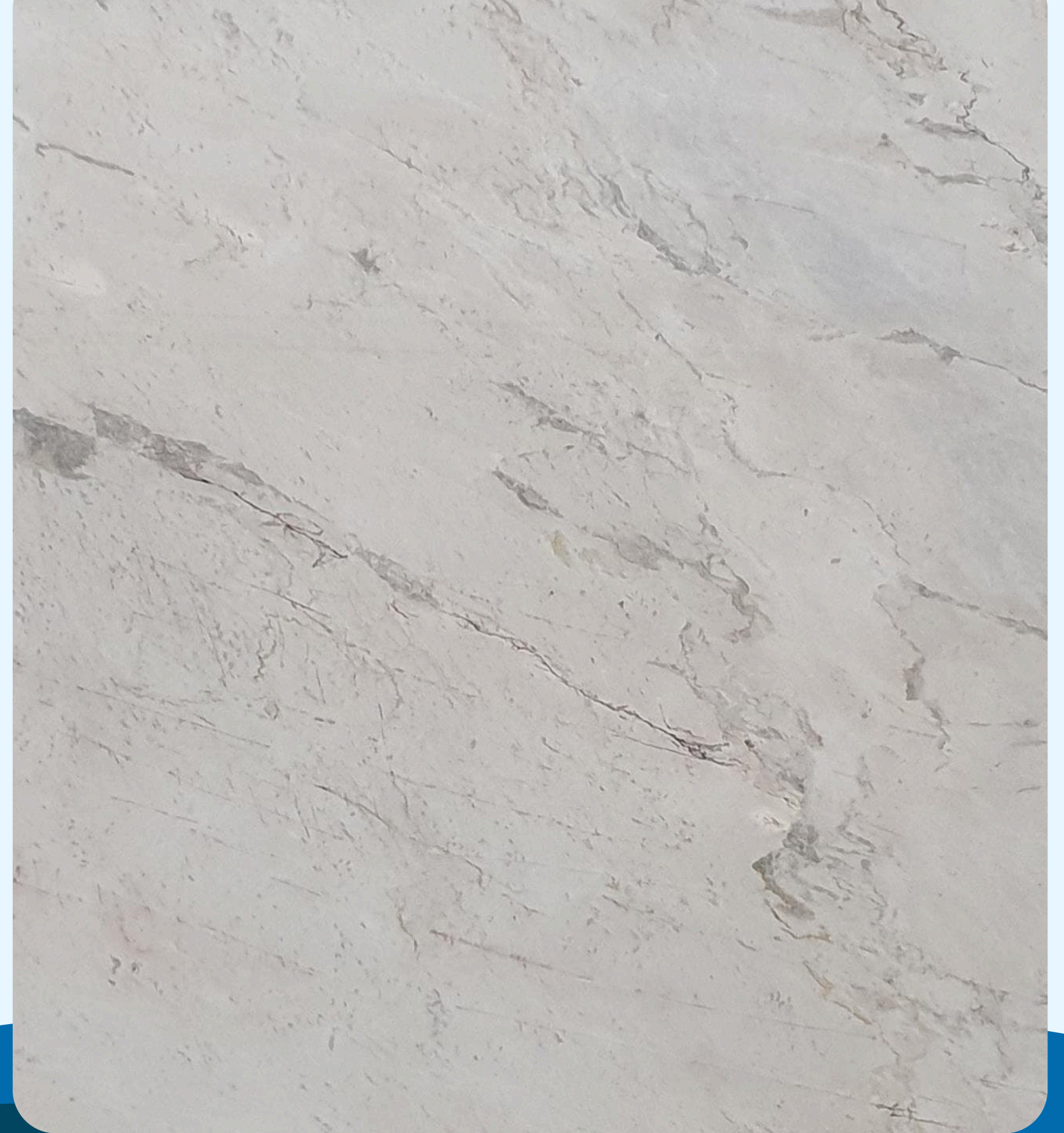
Brushed White Itaúnas granite **features a matte finish that enhances the natural texture of the stone.** Its light tone, with small gray grains, combines elegance and modernity, making it perfect for contemporary projects in kitchens and service areas.





# White Paraná

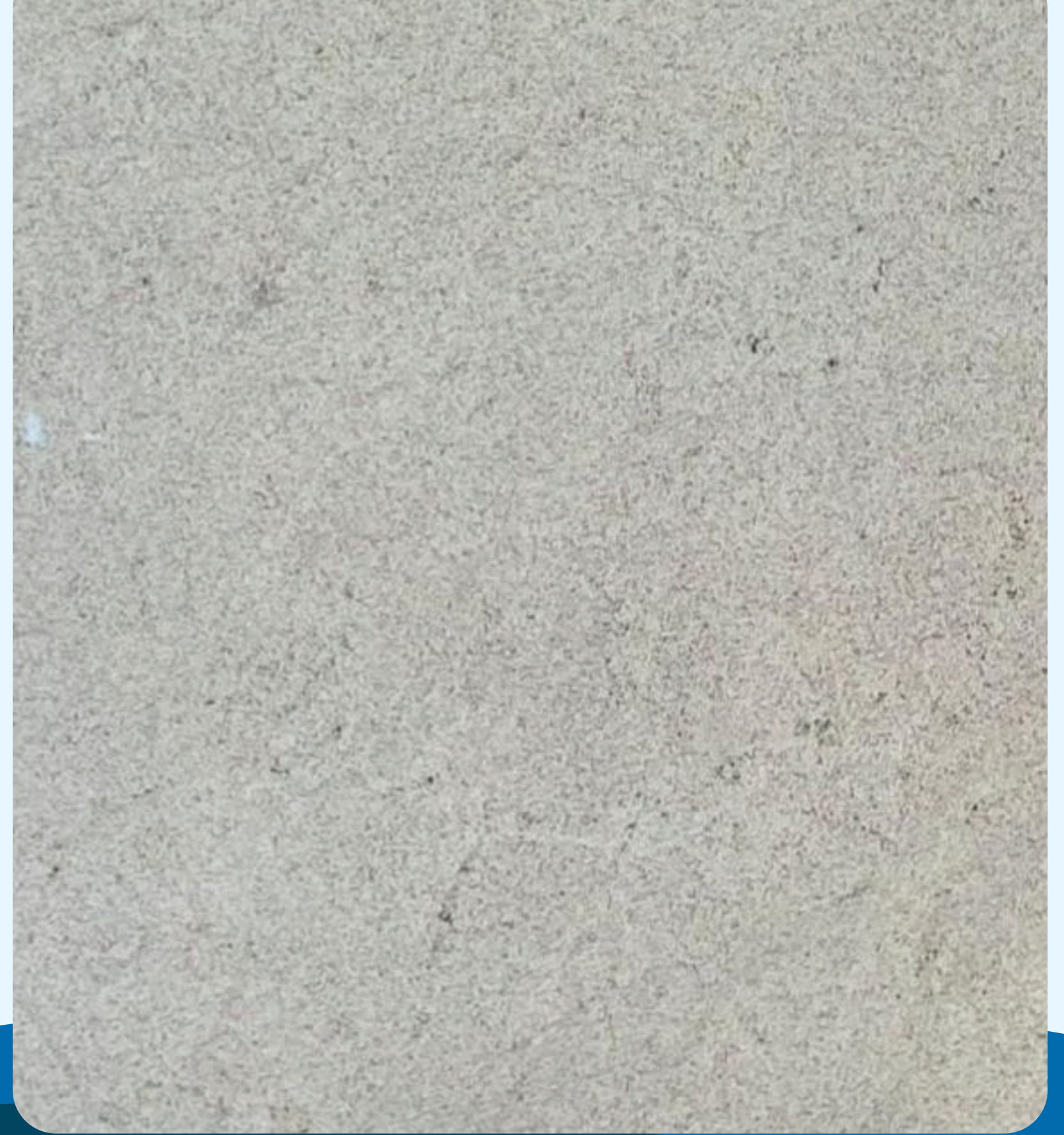
White Paraná marble **features a white or off-white base, with soft veins in golden-beige tones and subtle gray speckles.** Its polished finish provides a touch of natural elegance, making it a perfect choice for countertops, flooring, and wall cladding in sophisticated projects.





# White Siena

White Siena granite **has a predominantly white base, with soft veins in light beige and delicate gray tones**, giving it an elegant and sophisticated touch. It is ideal for countertops, flooring, and cladding in contemporary projects.





# Imperial Coffee

Imperial Coffee granite is a **natural stone with a dark brown tone, featuring golden and black nuances that create a sophisticated and uniform pattern.** It is widely used for countertops, flooring, and cladding, adding elegance and refinement to spaces. Its luxurious and durable appearance makes it a popular choice for high-end projects.





# Brushed Imperial Coffee

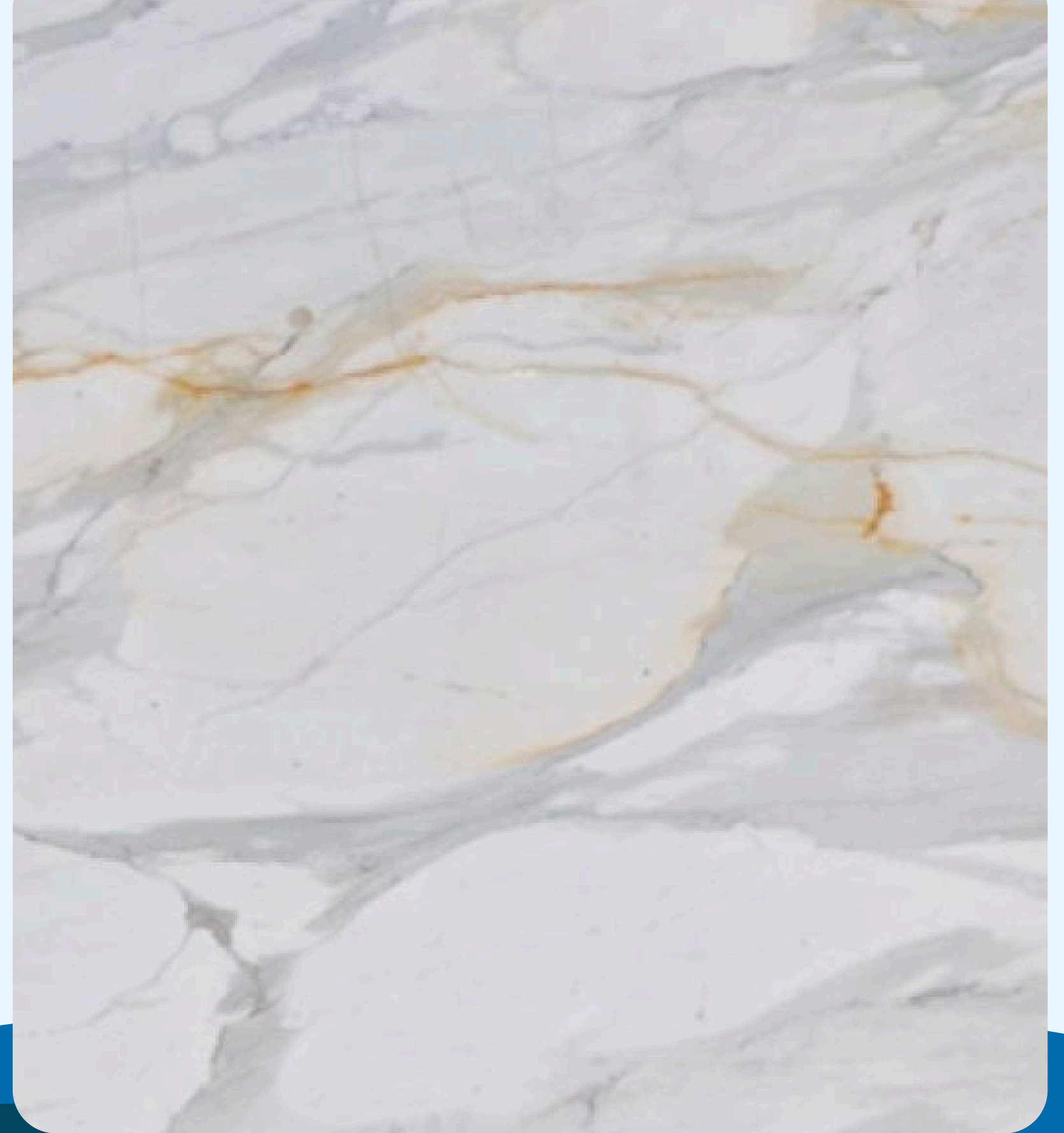
Brushed Imperial Coffee granite **retains the deep brown tones and dark veins characteristic of the polished version**, but with a matte finish and a slightly rough texture to the touch. This brushed effect enhances the natural details of the stone, giving it a rustic yet sophisticated look, ideal for high-end countertops, flooring, and cladding.





# Calacatta

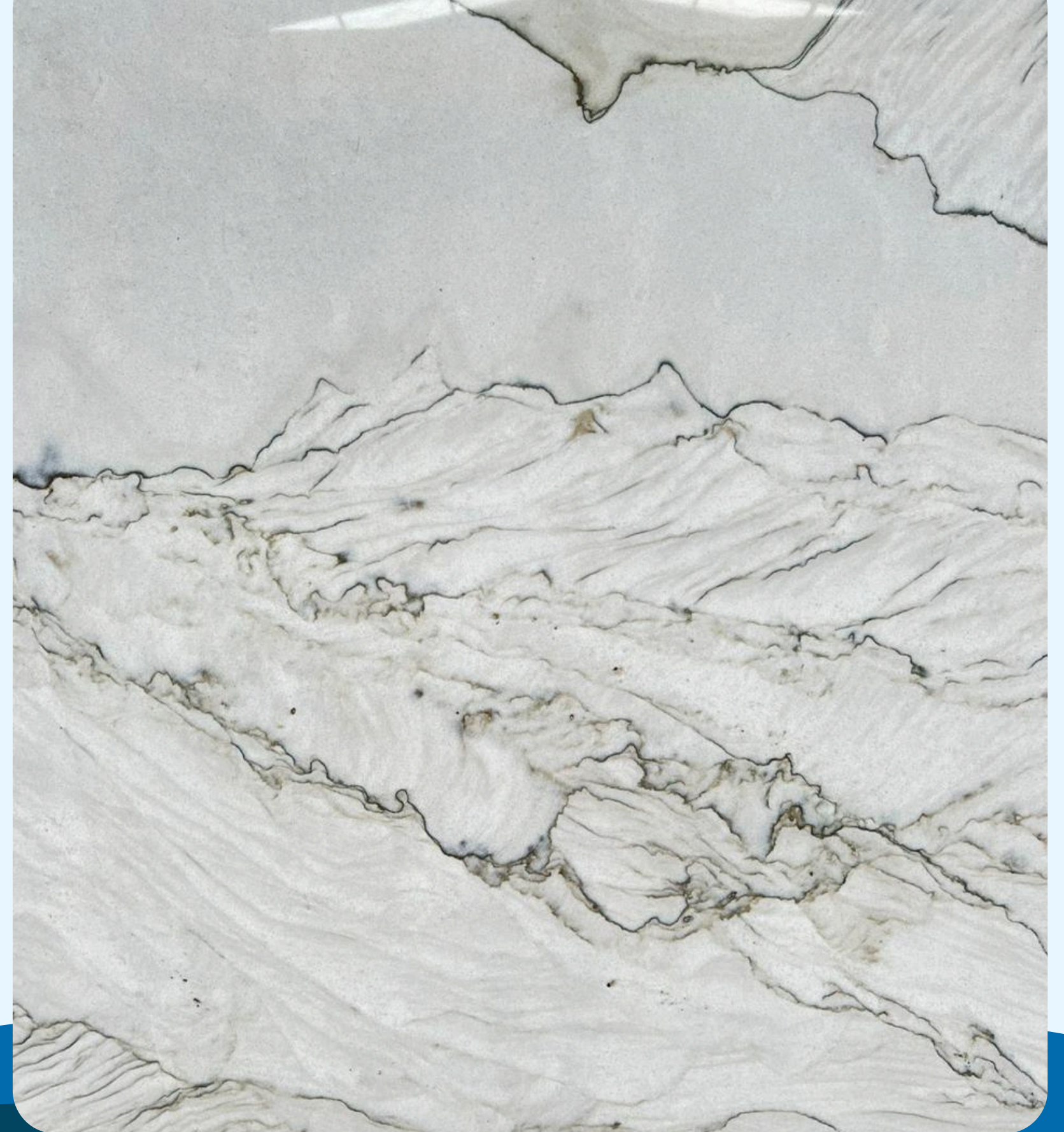
Calacatta marble is a **sophisticated natural stone, with a white or cream background and striking veins in gray, gold, or brown tones.** It is known for its luxurious appearance, frequently used for countertops, flooring, and cladding to create elegant and timeless spaces.





# Calacatta Silk

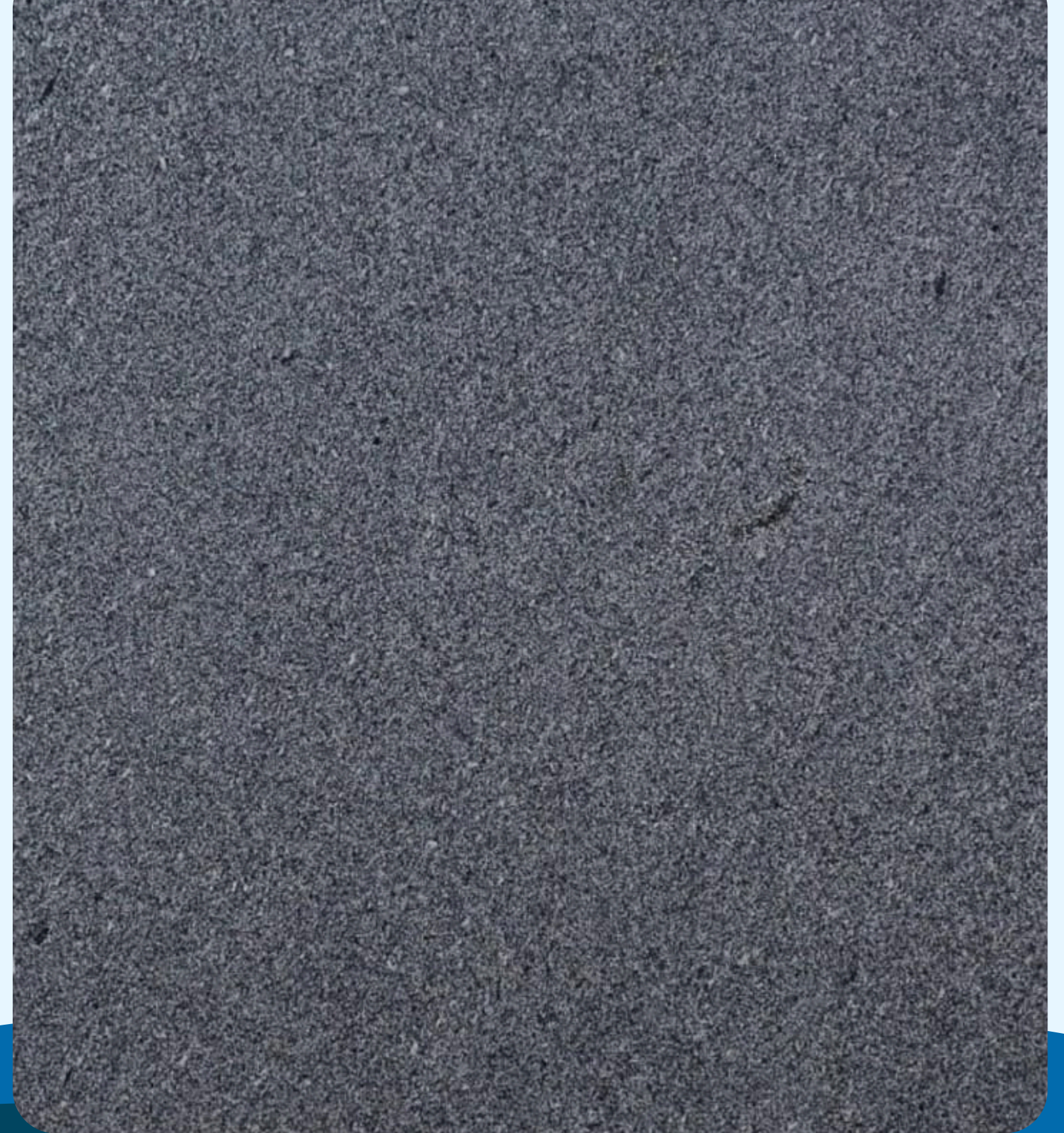
Calacatta Silk quartzite is a **sophisticated variation of Calacatta, featuring a soft white or beige background with delicate veins in gray and gold tones.** Its satin finish provides a velvety touch and a subtle shine, making it ideal for elegant and modern countertops, flooring, and cladding.





# Gray Andorinha

Gray Andorinha granite is a **natural stone with a medium gray tone, featuring fine and homogeneous grain in black and white tones**. Its subtle and versatile appearance makes it an excellent choice for countertops, flooring, and cladding, offering durability and a modern touch to spaces.





# Gray Corumbá

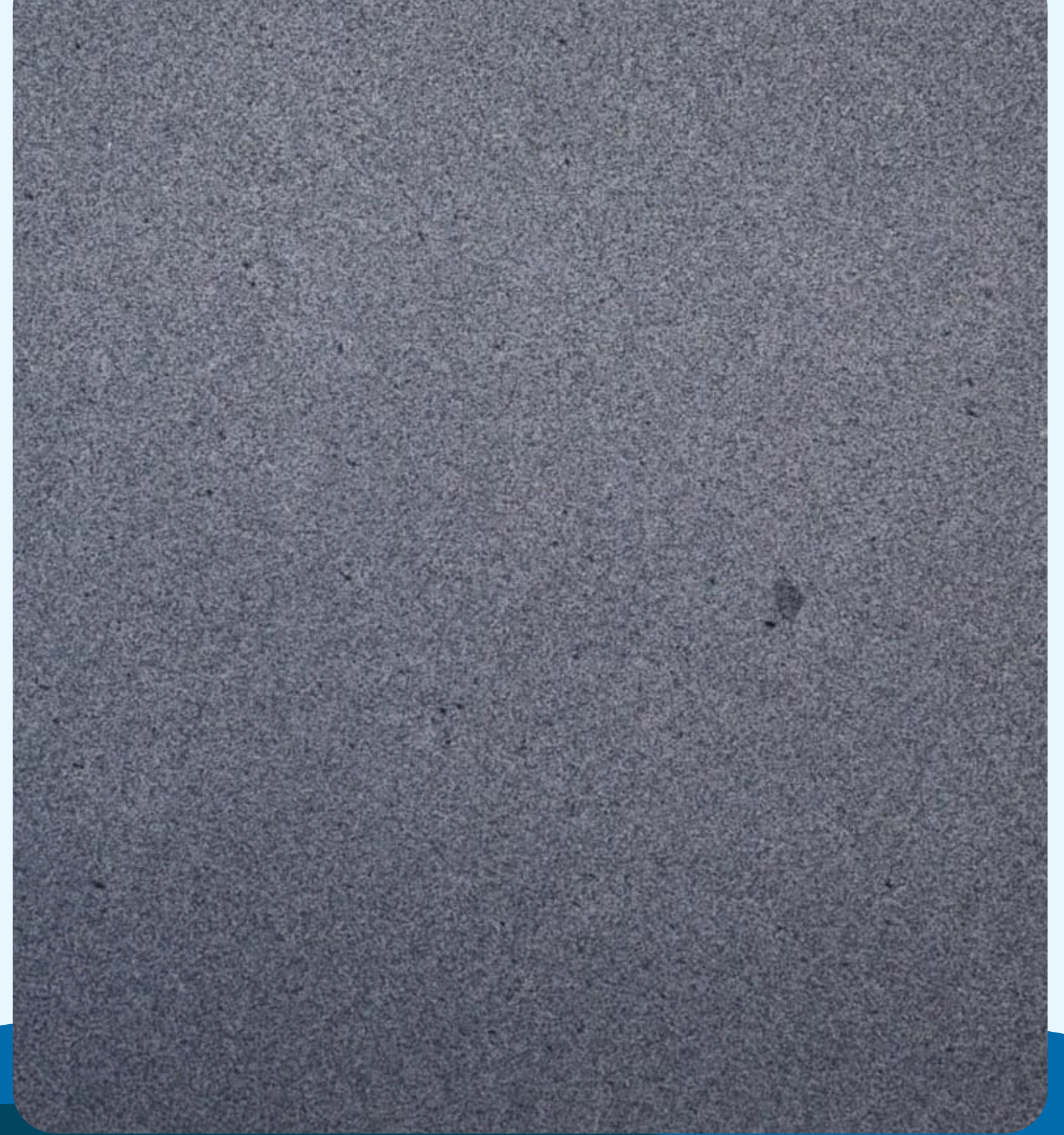
Gray Corumbá granite is a **natural stone with a light gray tone, featuring fine and homogeneous grain in black and white tones**. It is widely used for countertops, flooring, and cladding due to its durability and neutral appearance, which easily complements various decor styles.





# Gray Castelo

Gray Castelo granite is a **natural stone with a light gray tone, featuring a uniform texture and small black and white grains**. It is widely used for countertops, flooring, and cladding due to its durability, resistance, and neutral appearance, which complements various decor styles.





# Macchia Gold

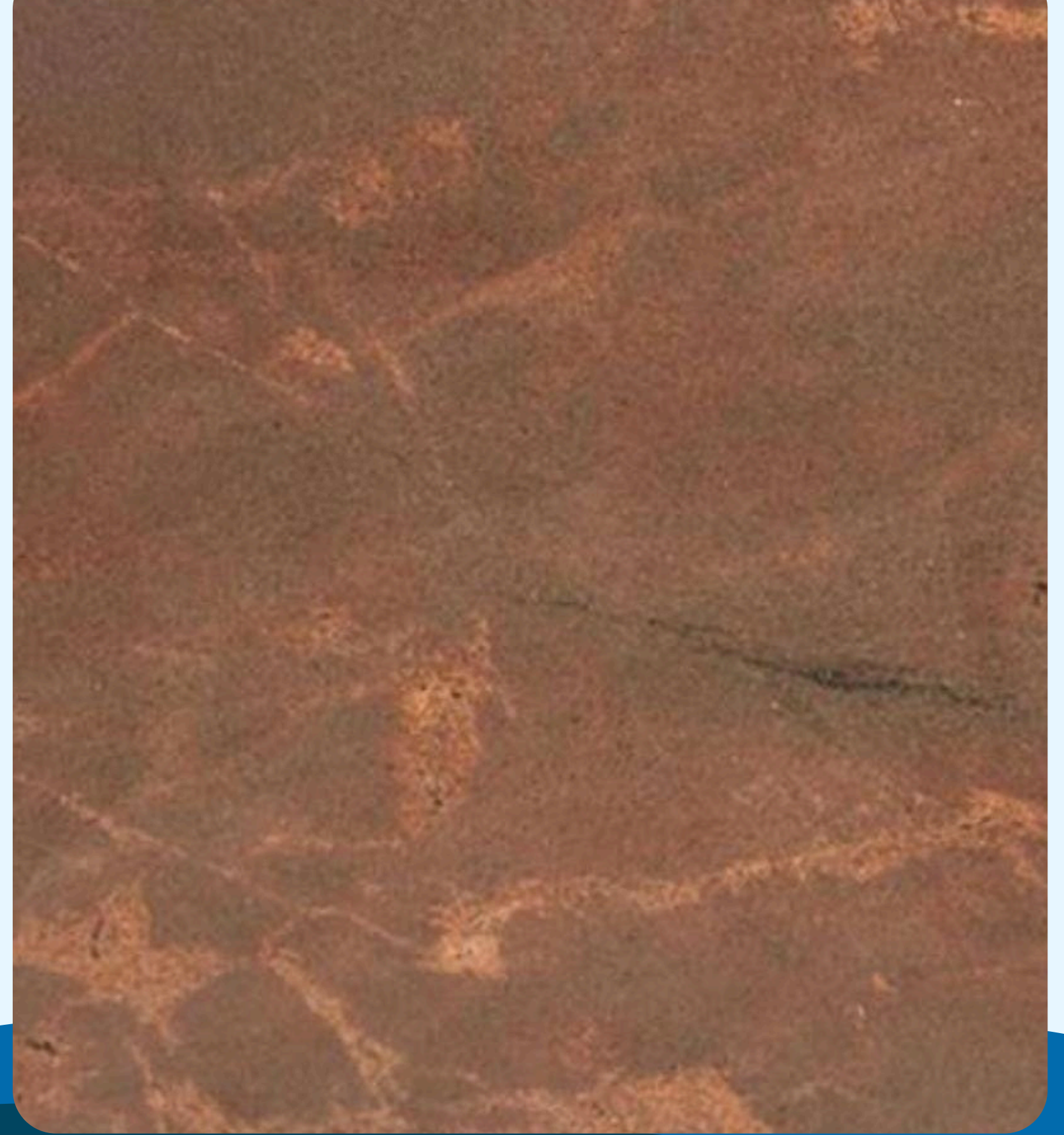
Macchia Gold marble is a **sophisticated natural stone, characterized by a white or cream background**, with striking veins in golden, brown, and gray tones. Its luxurious appearance makes it an excellent choice for countertops, flooring, and cladding in elegant and sophisticated spaces.





# Brown Tabaco

Brown Tabaco granite is a **natural stone with a dark brown tone, featuring dense grain and coppery and black nuances**, creating a sophisticated and imposing look. Its high durability and elegant appearance make it an excellent choice for countertops, flooring, and cladding.





# Matarazzo

Matarazzo marble is a **sophisticated natural stone, with a white or off-white background and striking veins in gray and gold tones.** Its unique and elegant pattern makes it a luxurious choice for countertops, flooring, and cladding, bringing sophistication to any space.





# Monte Cristo

Monte Cristo marble is an **elegant natural stone, with a white or light gray background and striking veins in black, gray, and gold tones.** Its sophisticated and exclusive pattern makes it ideal for countertops, flooring, and cladding, adding refinement and modernity to spaces.





# Ocre Itabira

Ocre Itabira granite is a **natural stone with white, black, and gray tones**. Its warm and sophisticated appearance makes it an excellent choice for countertops, flooring, and cladding, adding a rustic and elegant touch to spaces.





# Onyx Crystal

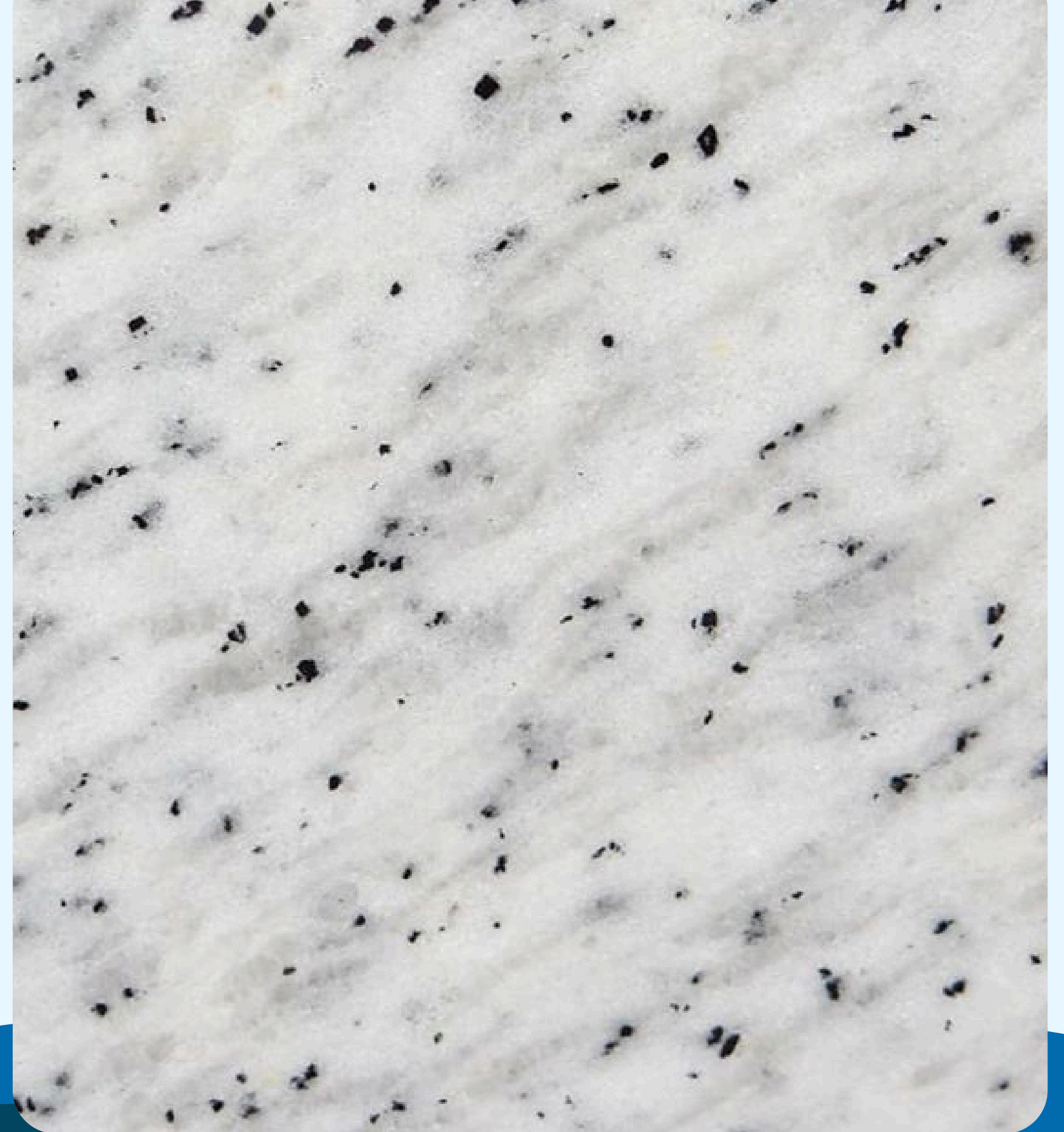
Onyx Crystal is a **translucent natural stone, known for its light background, which can range from white to soft beige, with elegant veins in golden, amber, and gray tones.** Its translucent feature allows backlighting, creating sophisticated and luxurious visual effects, making it ideal for decorative cladding, panels, and exclusive countertops.





# Pitaya

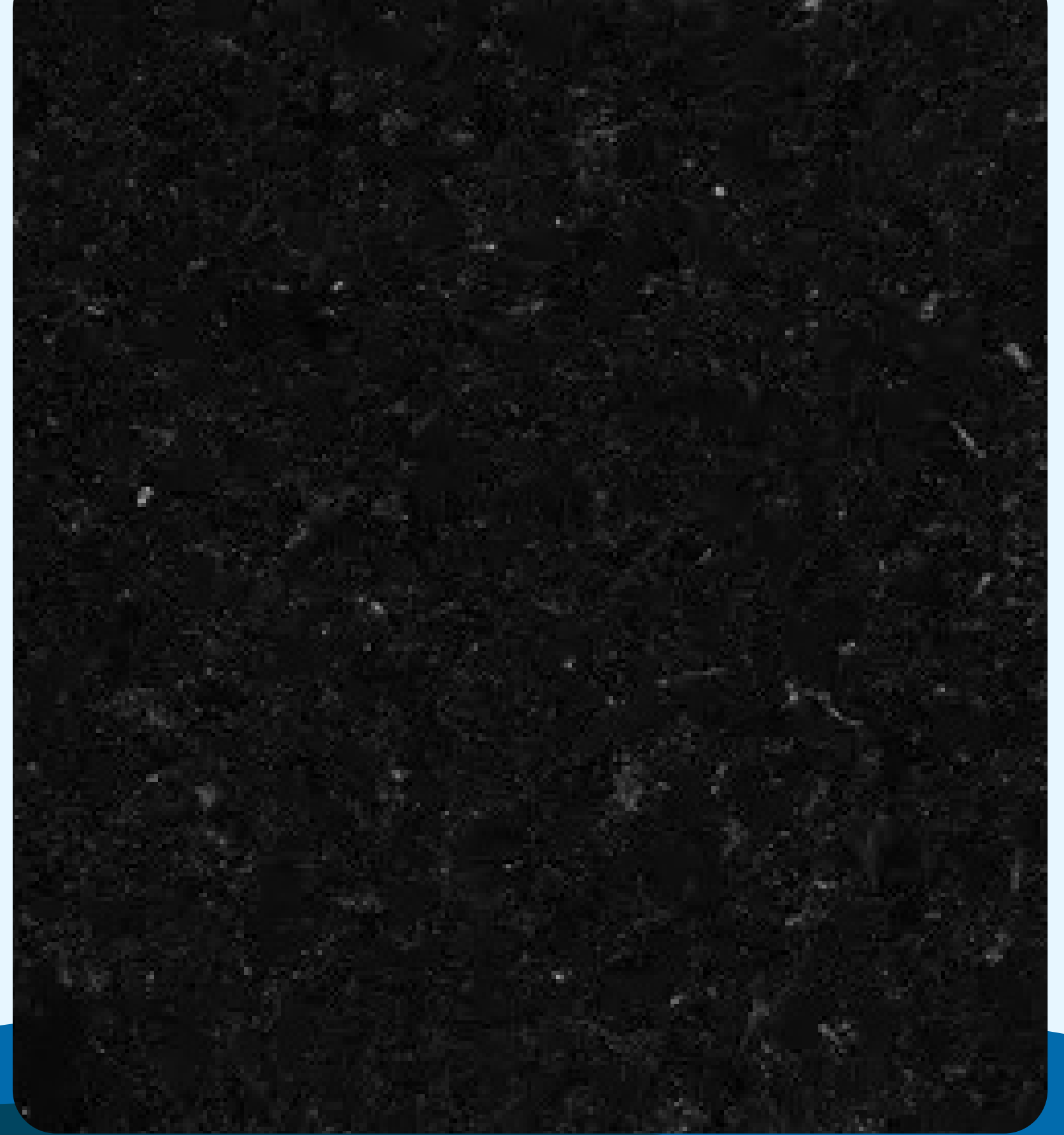
Pitaya granite is a striking natural **stone, with a light background that can range from white to beige, highlighting expressive veins in gray, black, and sometimes pinkish hues.** Its sophisticated and unique appearance makes it an excellent choice for modern and elegant countertops, flooring, and cladding.





# Absolute Black

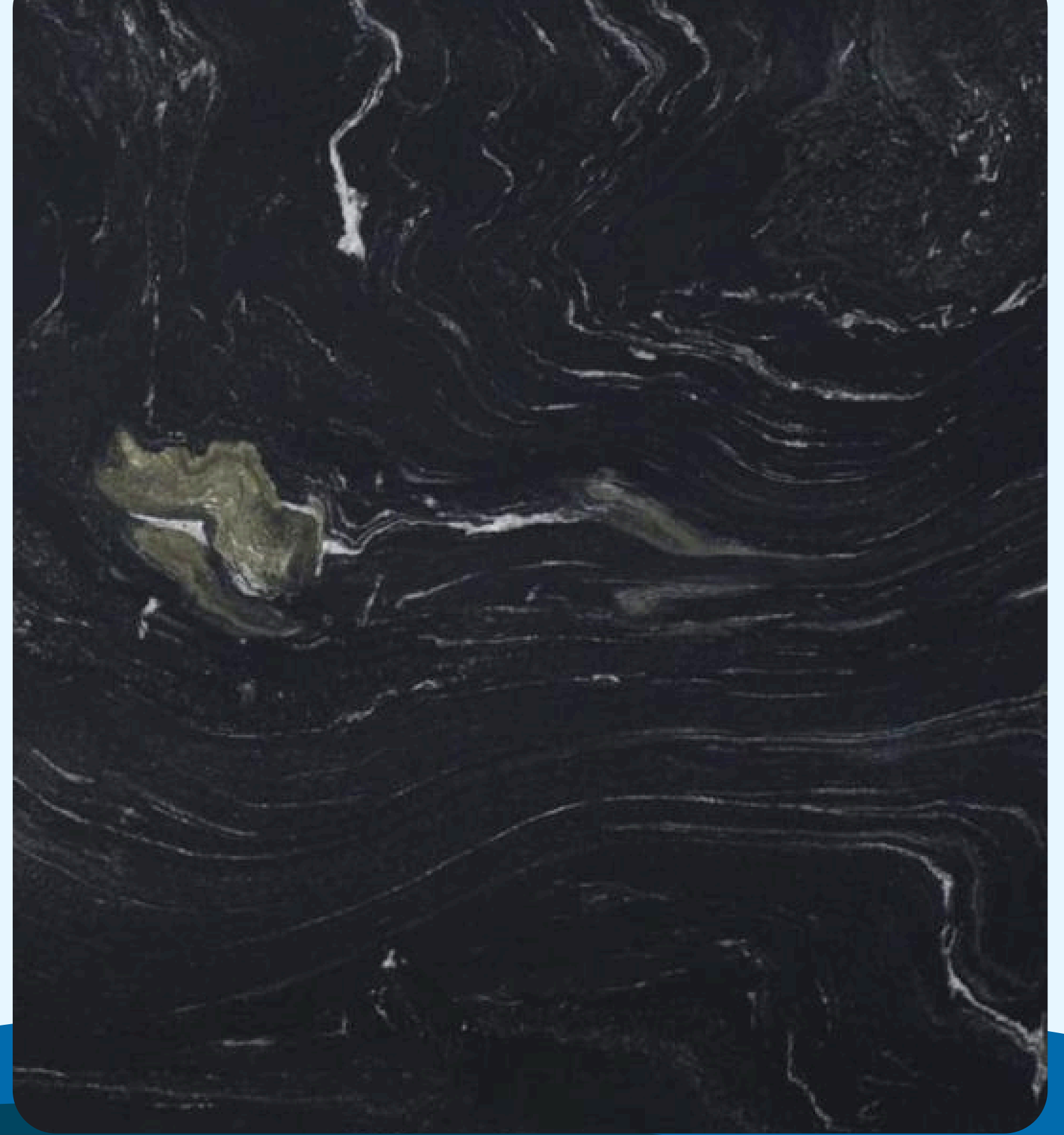
Absolute Black granite is a **natural stone with a uniform black tone, without visible veins or variations, offering a sophisticated and modern look.** Its high durability and elegant finish make it a popular choice for countertops, flooring, and cladding in contemporary projects.





# Makalu Black

Makalu Black granite is a **sophisticated natural stone, with a deep black background and subtle veins in gray and gold tones.** Its striking texture and elegance make it an excellent choice for countertops, flooring, and cladding, adding modernity and refinement to spaces.





# São Gabriel Black Brushed

São Gabriel Black Brushed granite is a **natural stone with an intense black tone, featuring a brushed finish that gives it a slightly matte and velvety texture.** This finish enhances its elegance and sophistication, making it widely used for countertops, flooring, and cladding in modern and sophisticated spaces.





# São Gabriel Black Polished

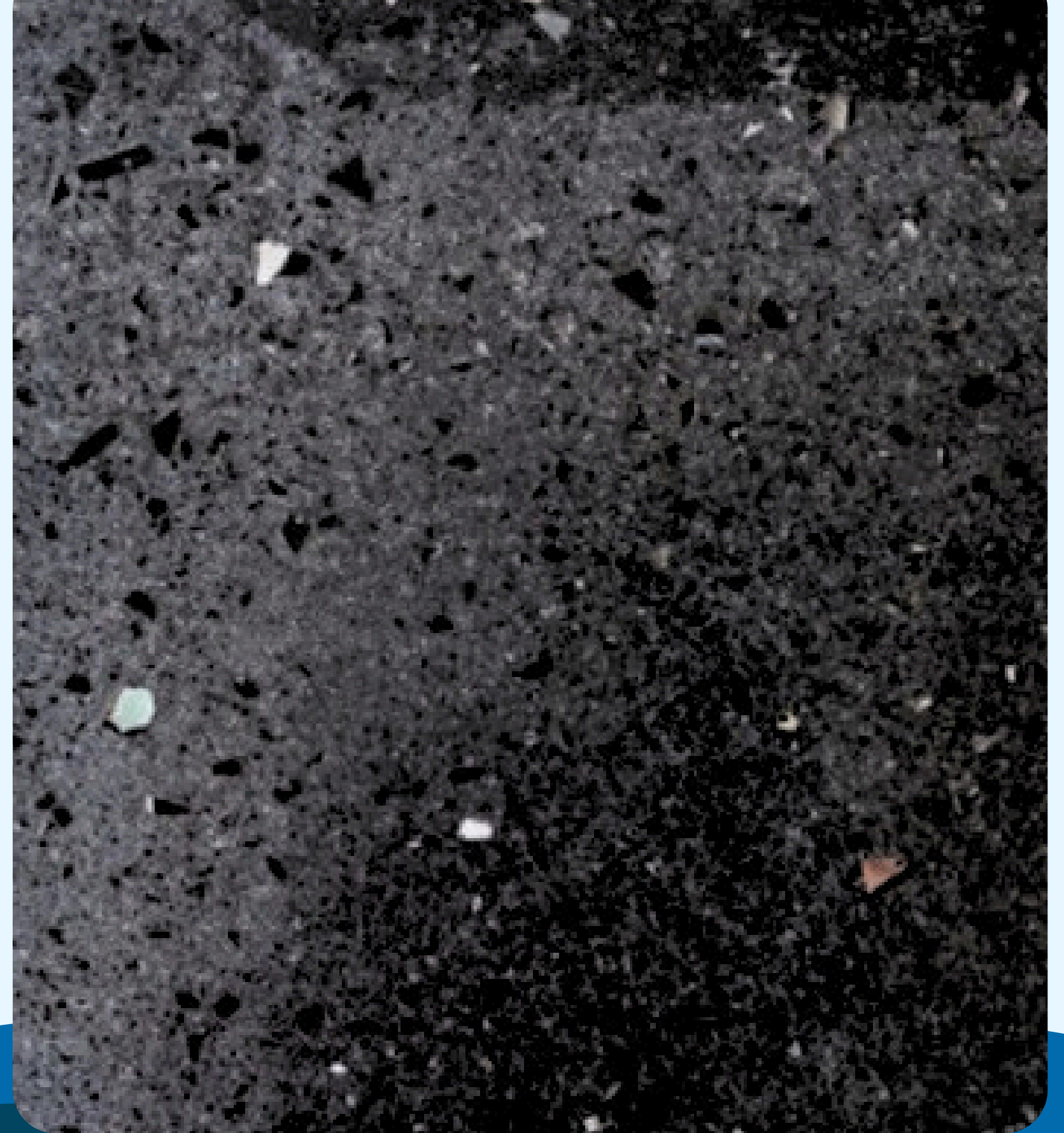
São Gabriel Black Polished granite is a **natural stone with an intense black color, featuring a highly glossy and reflective surface.** Its polished finish enhances the material's sophistication, making it a popular choice for countertops, flooring, and cladding. In addition to its elegance, São Gabriel Black Polished is known for its high resistance and durability, making it ideal for modern and sophisticated spaces.





# Semi-Absolute Black

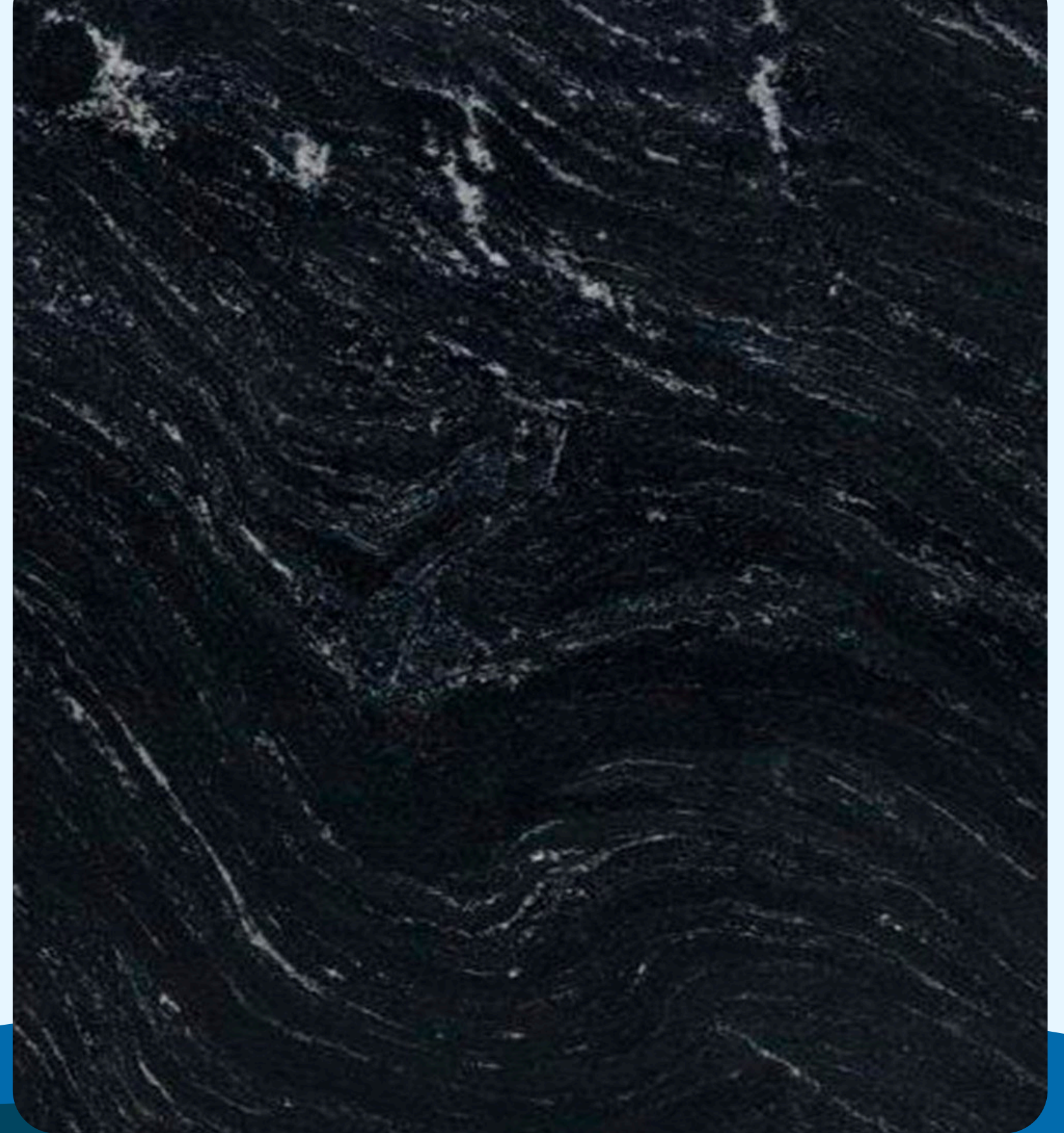
Semi Absolute Black granite is a **natural stone with an intense black tone, but with a slight visible grain**, differing from Absolute Black by its subtly speckled texture. Its finish can be polished, brushed, or matte, providing a sophisticated and versatile look.





# Via Lactea Black

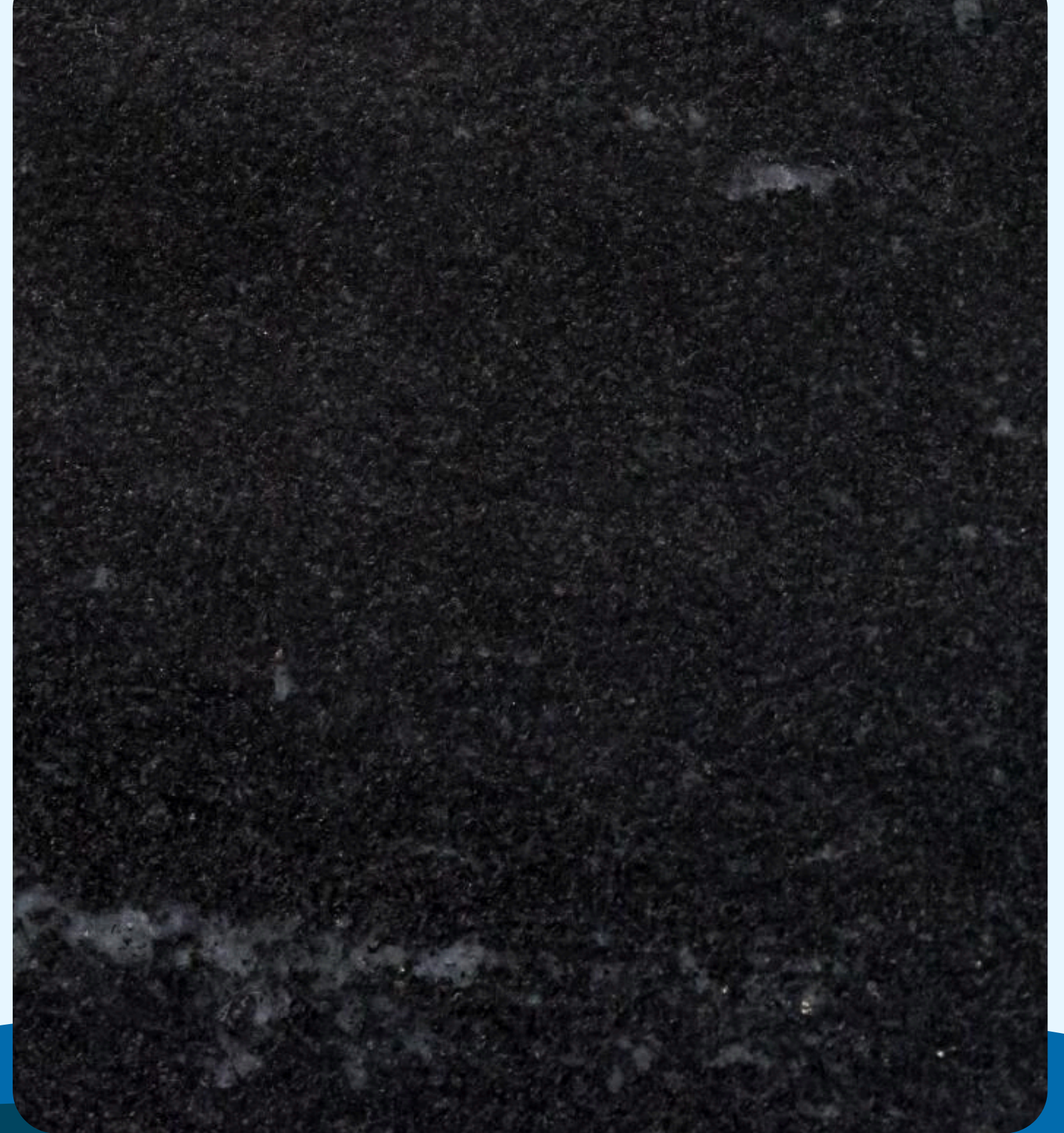
Via Lactea Black granite is a **natural stone with a deep black background, featuring fine and delicate white veins resembling the shine of stars in the night sky.** Its sophisticated and striking appearance makes it an excellent choice for countertops, flooring, and cladding, adding elegance and a touch of exclusivity to any space.





# Brushed Via Lactea Black

Brushed Via Lactea Black granite is a **natural stone with a deep black background, featuring subtle white veins that resemble a starry sky.** Its brushed finish provides a matte, slightly rough texture, giving it a rustic touch without losing sophistication. Highly durable and versatile, it is ideal for countertops, flooring, and cladding, adding elegance and modernity to spaces.





# Thajmahal

Thajmahal quartzite is a **sophisticated natural stone, with a predominantly light beige tone and soft golden and gray veins that give it an elegant and timeless look.** Its appearance resembles marble, but with the strength and durability of granite, making it ideal for countertops, flooring, and cladding in refined and modern spaces.





# Valentino

Valentino marble is a **sophisticated natural stone, characterized by a light background with delicate veins in shades of beige, gold, and gray, providing an elegant and timeless look.** Its refined appearance combines the strength of granite with a soft and sophisticated aesthetic, making it ideal for countertops, flooring, and cladding in modern and luxurious projects.





# Brushed Valentino

Brushed Valentino marble is a **natural stone with a light background and subtle veins in shades of beige, gold, and gray**. Its brushed finish provides a smooth, matte texture, giving it a sophisticated and contemporary touch. In addition to its unique beauty, it is a highly durable and resistant material, ideal for countertops, flooring, and cladding in elegant and modern spaces.





# Pearl Green

Pearl Green granite is a **natural stone with a dark green hue, dotted with small light crystals that create a subtle and elegant pearlescent effect.** Its homogeneous and sophisticated pattern makes it an excellent choice for countertops, flooring, and cladding, adding a touch of sophistication and nature to the space. Additionally, its high resistance and durability ensure a refined and long-lasting finish.





# Brushed Pearl Green

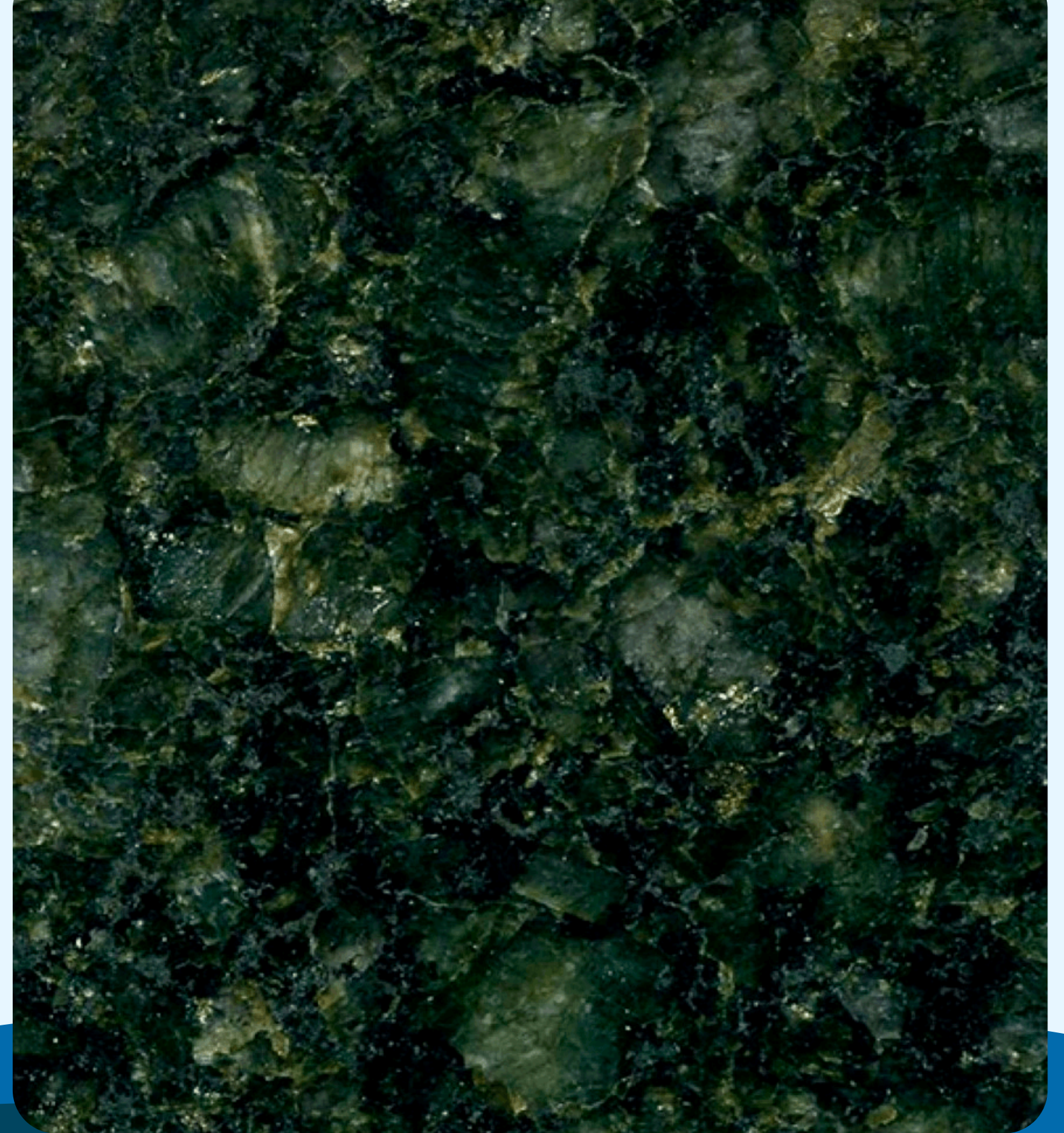
Pearl Green Brushed granite is a **natural stone with a deep green tone, characterized by small light crystals that create a subtle and elegant pearlescent effect.** Its brushed finish provides a matte, slightly rough texture, giving it a sophisticated and modern look. In addition to its refined aesthetic, this granite is highly resistant and durable, making it ideal for countertops, flooring, and cladding in spaces that seek a natural and elegant touch.





# Ubatuba Green

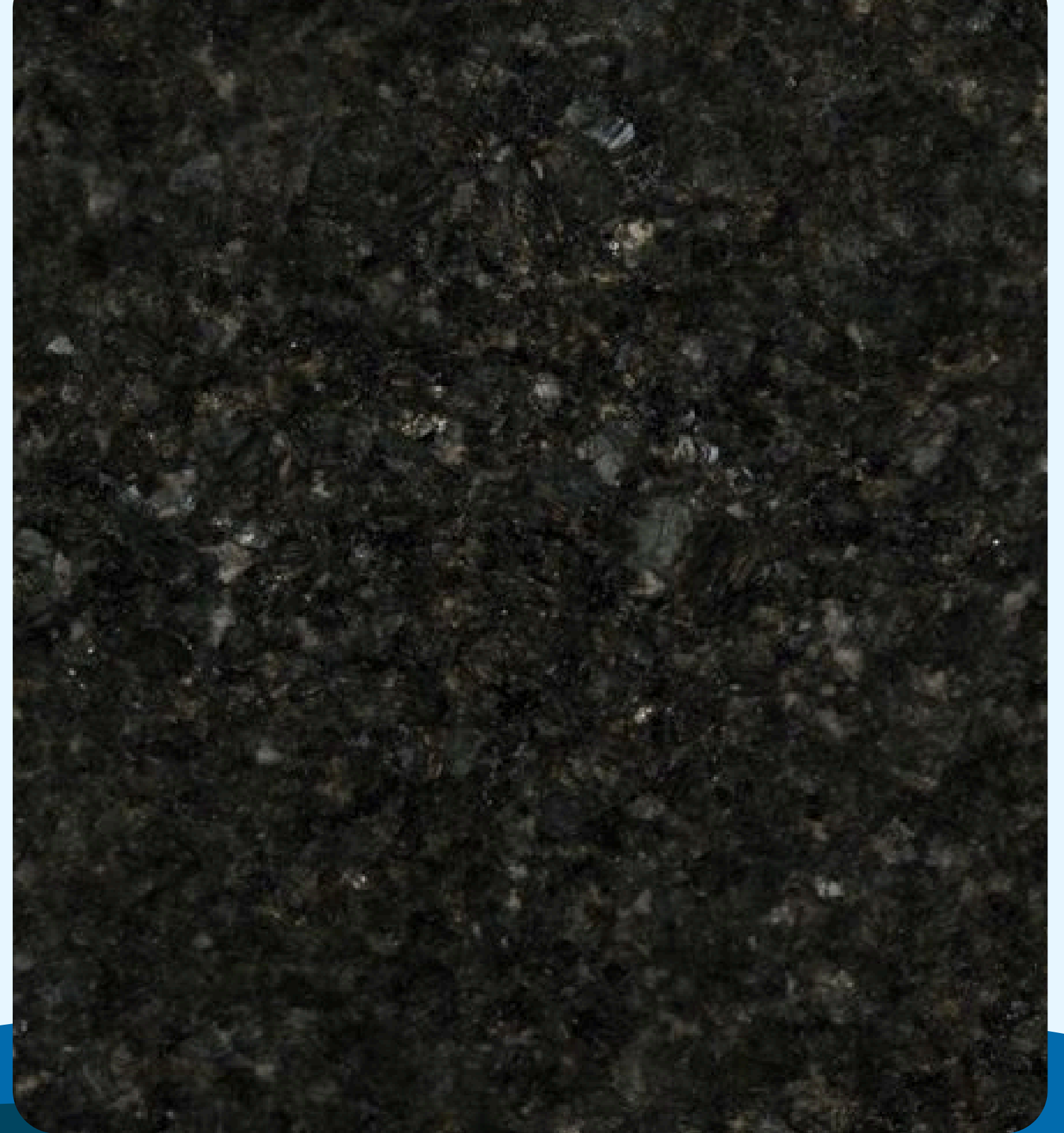
Ubatuba Green granite is a **natural stone with a dark green, almost black tone, with small golden and greenish crystals scattered across its surface.** Its dense and homogeneous pattern gives it a sophisticated and timeless look, making it a popular choice for countertops, flooring, and cladding. In addition to its striking aesthetic, it is a highly resistant and durable material, ideal for both indoor and outdoor spaces.





# Verde Ubatuba Escovado

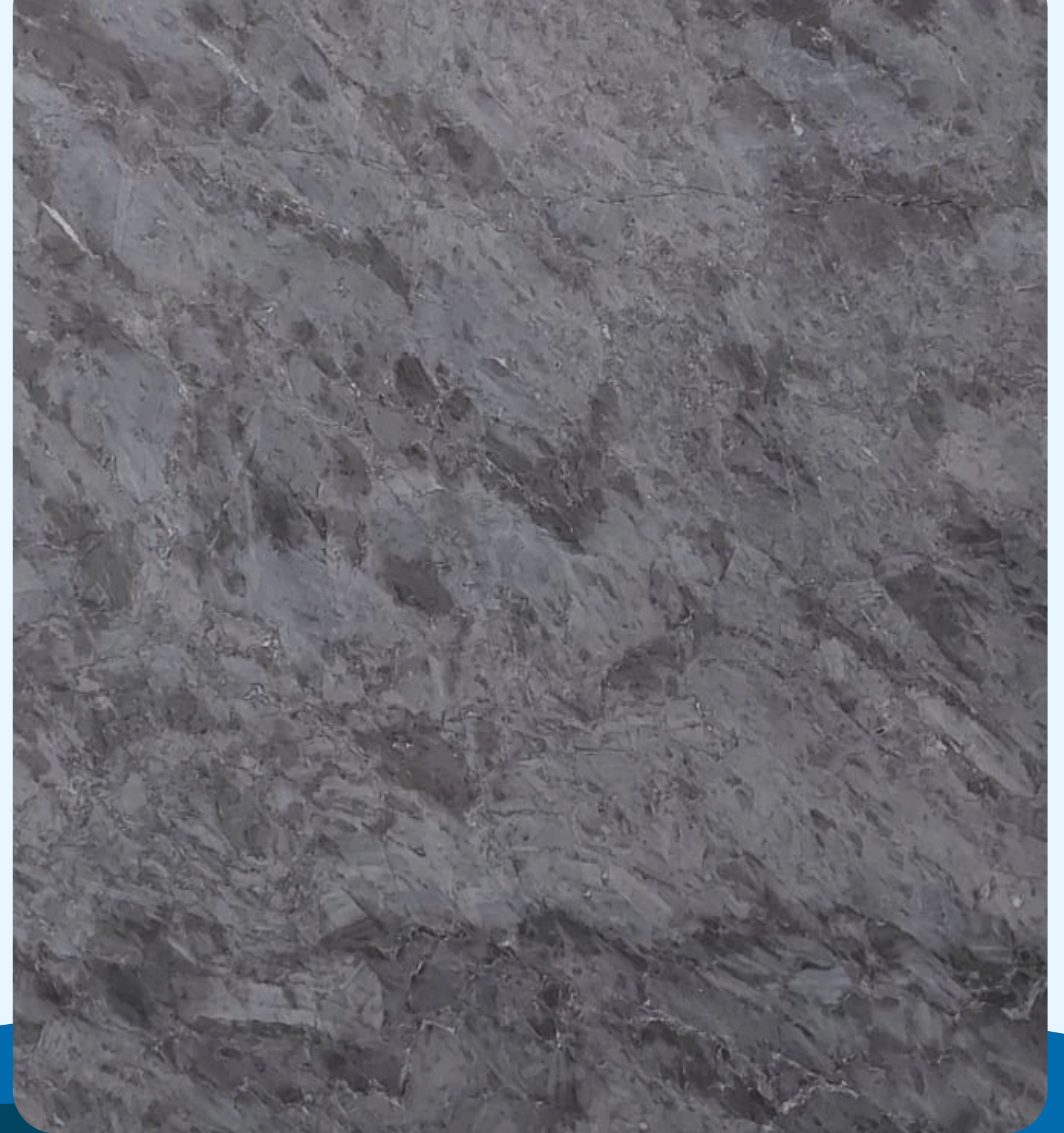
Ubatuba Green Brushed granite features a **deep dark green tone, almost black, with small golden and greenish reflections scattered across its surface.** Its brushed finish adds a smooth, matte texture, giving it a more natural and sophisticated look. In addition to its aesthetic appeal, this granite stands out for its high resistance and durability, making it ideal for countertops, flooring, and cladding, both in indoor and outdoor spaces.





# Gray Arabescattus

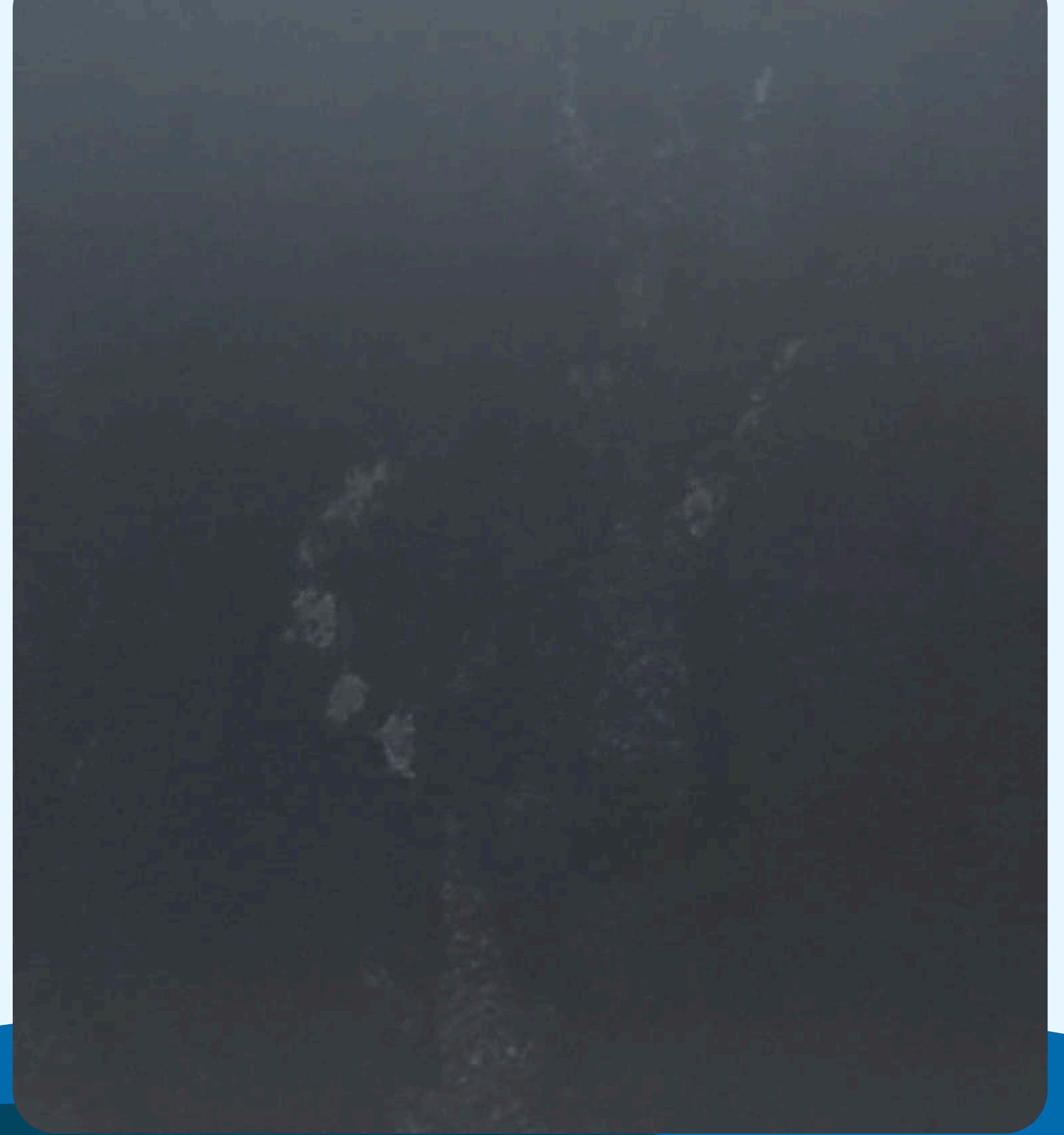
Gray Arabescattus marble is a **natural stone with a light gray tone, featuring striking veins in dark shades**, bringing sophistication and modernity to any space. Elegant and versatile, it complements both contemporary and classic projects.





# Cottom Black

Cottom Black granite features a **deep black tone, almost black, with small light reflections scattered across its surface. Its finish adds a smooth**, matte texture, giving it a more natural and sophisticated look. In addition to its aesthetic appeal, this granite stands out for its high resistance and durability, making it ideal for countertops, flooring, and cladding, both in indoor and outdoor spaces.







As natural stones, by their very nature, are subject to variations in color, patterns, and veins.

Their nature makes each piece exclusively beautiful and unique, with its own designs.





Contact us and get  
**quality and excellence!**

+ 55 (48) 99646-6180

[rb@rbbroker.log.br](mailto:rb@rbbroker.log.br)